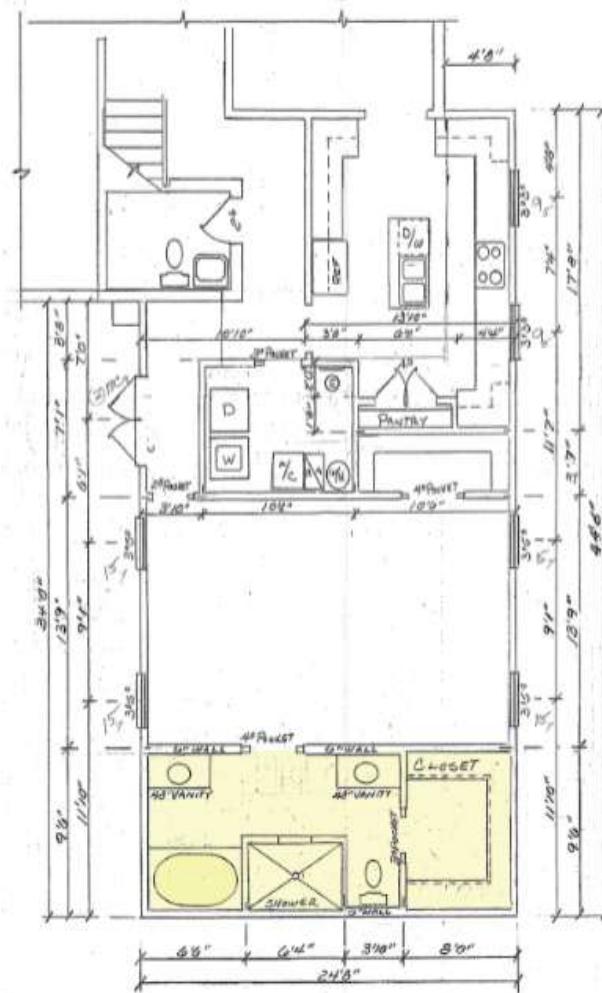




Ortega Bathroom Addition  
2009 Remodelers Awards  
Category 2-C



FLOOR PLAN  
SCALE 3/4" = 1'



2009 Remodelers Awards

**SNC** Sport Nobles Construction, Inc.  
Custom Builder

This impressive addition of a master bath provides a luxury retreat for the homeowners. The open shower consists of tile walls and floors, a sitting niche and is encompassed by a glass block design.

The deep soaking tub is a great place for relaxing! It has a raised panel on the front in an espresso finish to match the his and her vanities.



2009 Remodelers Awards

**SNC** Sport Nobles Construction, Inc.  
Custom Builder

Keeping in mind the idea of comfort, this master suite was created as part of an addition to the existing house.

The original master bedroom lacked adequate closet space and a separate master bath. To remedy, his and her closets were added, along with a luxurious master bath.

The project was successful in creating a spacious retreat for the homeowners.

