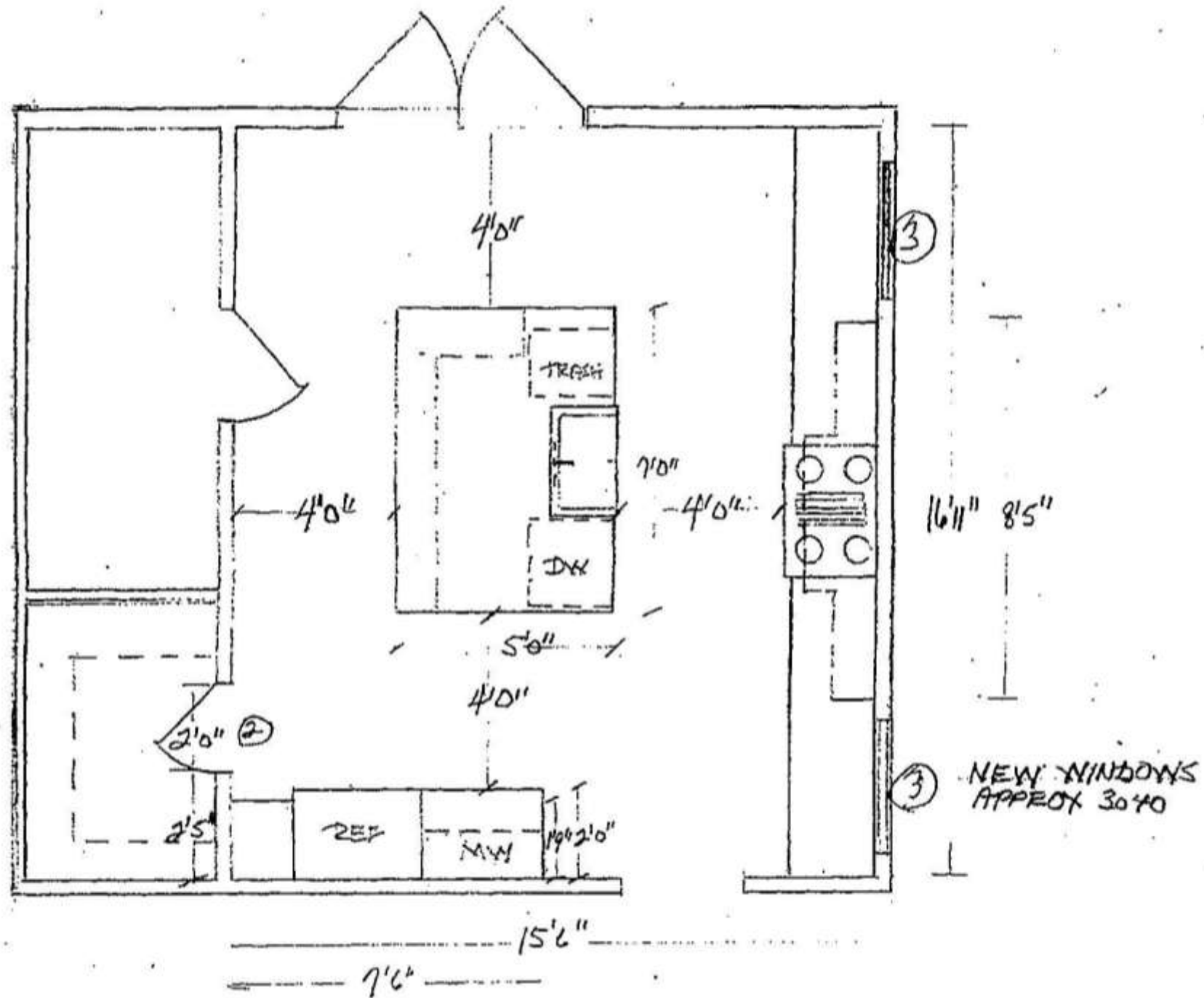




Airy Ortega Update
2009 Remodelers Awards
Category 2-B

SNC Sport Nobles Construction, Inc.
Custom Builder

FLOORPLAN
 SCALE 1/4" = 1'-0"

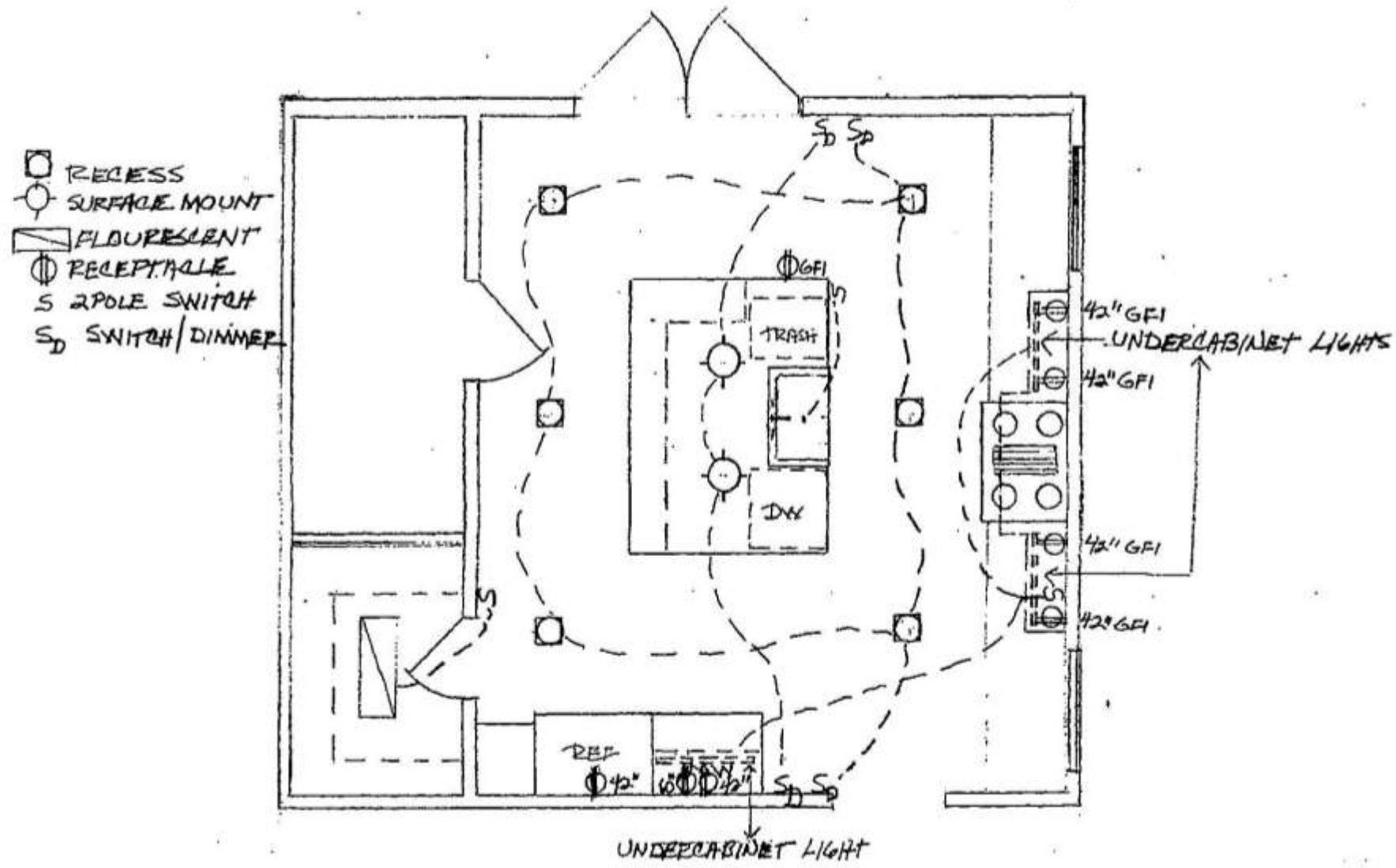


2009 Remodelers Awards



ELECTRICAL PLAN

SCALE 1/4" = 1'-0"

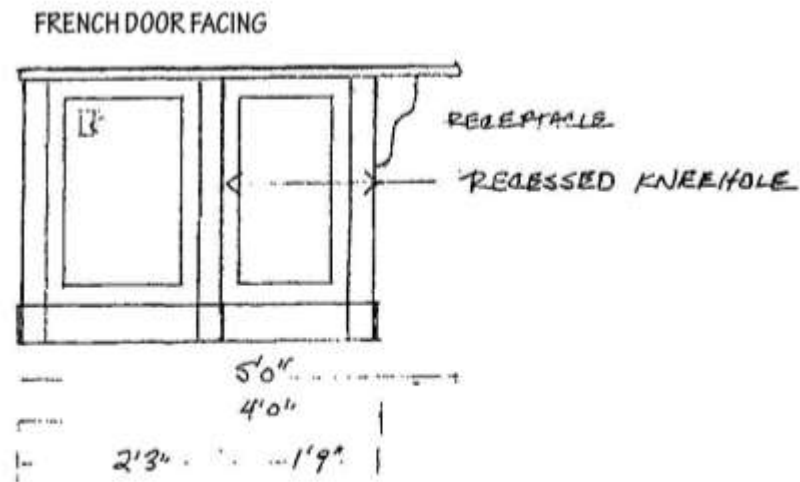
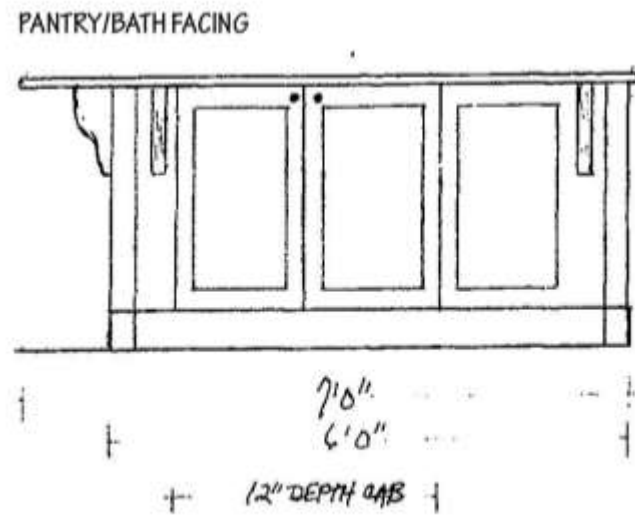
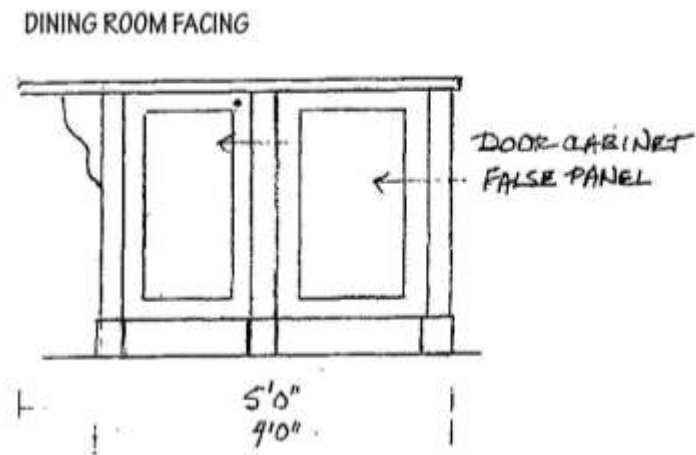
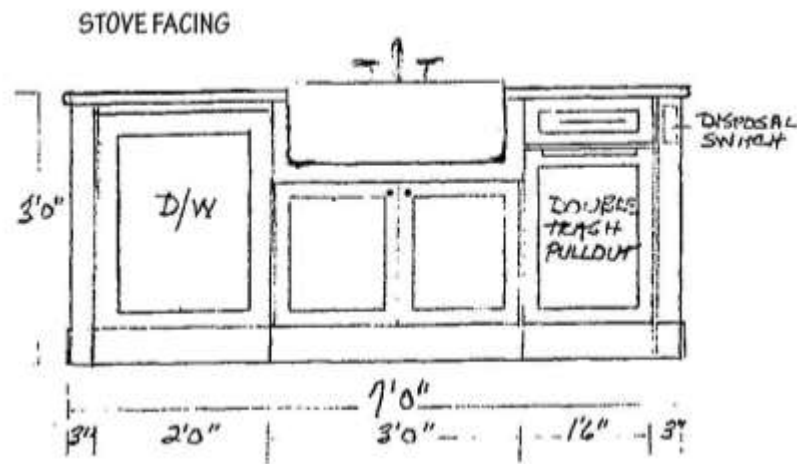


2009 Remodelers Awards



ISLAND ELEVATIONS

SCALE: 1/2" = 1'-0"

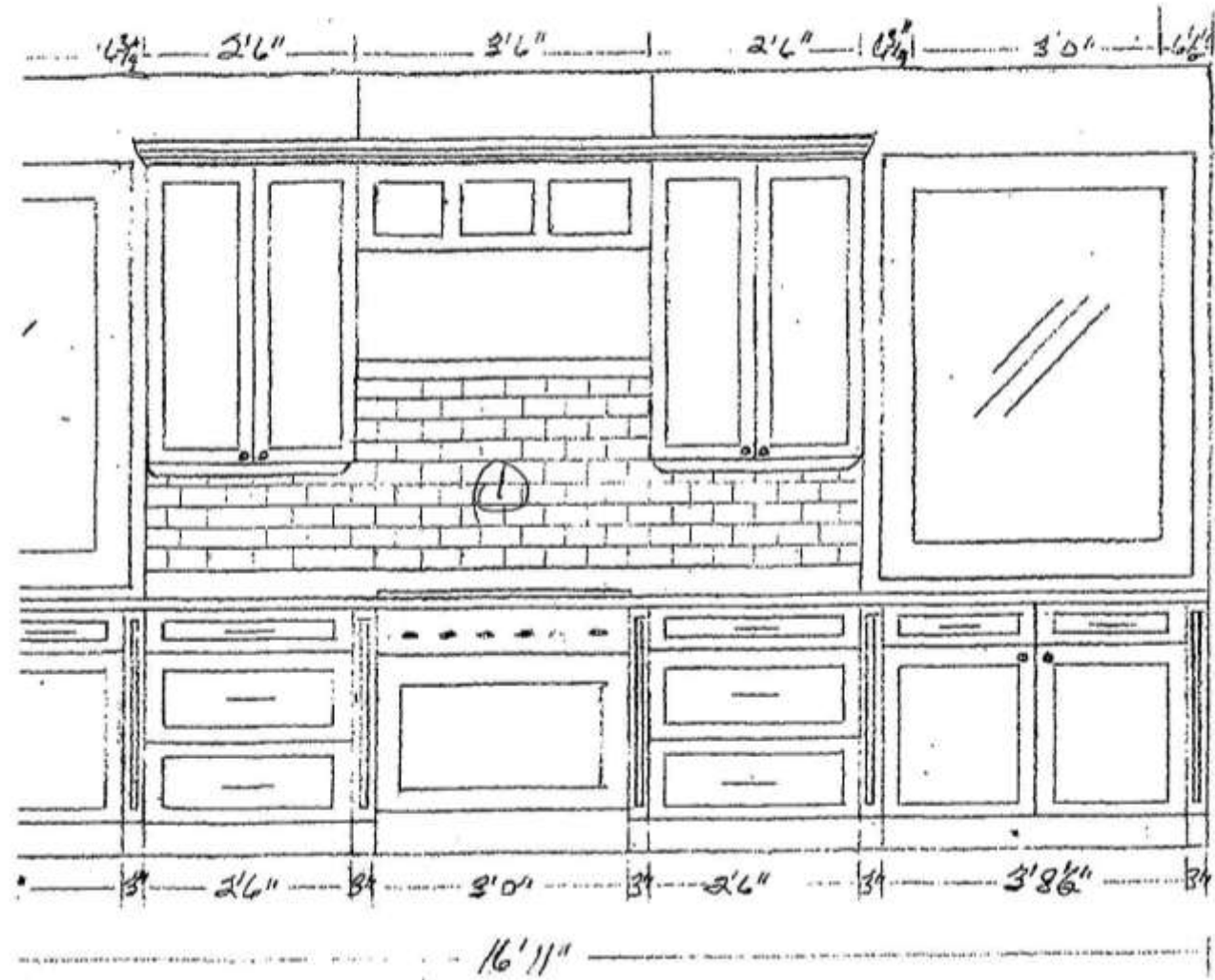


2009 Remodelers Awards



STOVE WALL ELEVATION

SCALE 1/2" = 1'-0"



2009 Remodelers Awards





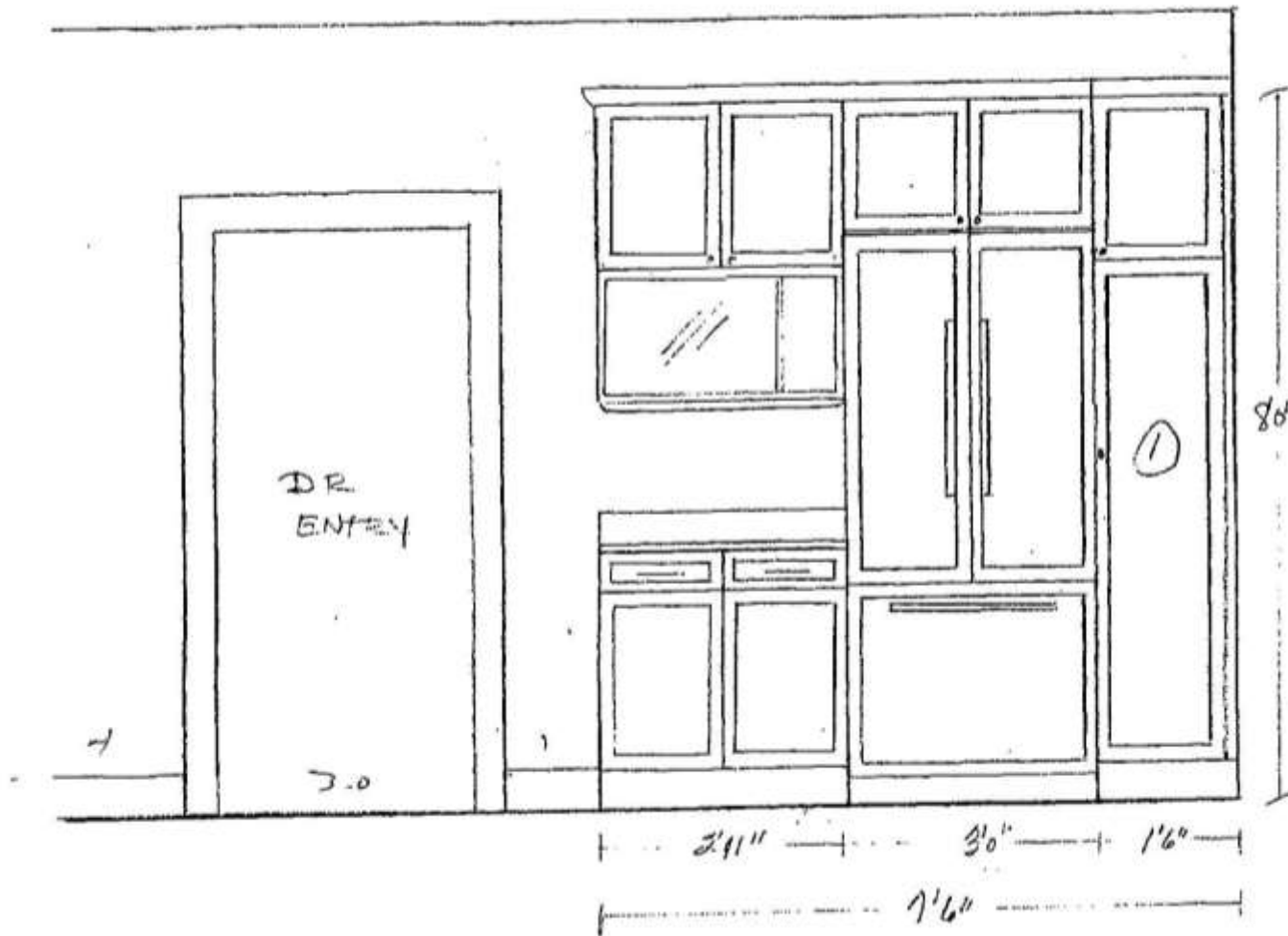
When the owners decided to transpose the den into a kitchen, not only did they increase the natural flow of the home, but they created a wonderful working kitchen perfect for both small and large gatherings. The kitchen boasts a dual-fuel range with matching stylish hood, a subway tile backsplash, honed black granite countertops and white shaker style custom cabinetry.



2009 Remodelers Awards

SNC Sport Nobles Construction, Inc.
Custom Builder

REFRIGERATOR WALL
ELEVATION
SCALE 1/2" = 1'-0"





A spacious island was added, complete with an eat-in area, a farmhouse sink and additional cabinetry. To utilize all space to the fullest, a utility closet was converted into a full shelf pantry. The refrigerator is covered with matching white shaker style panels.

What a great place to have breakfast with the kids!



2009 Remodelers Awards





Pre-renovation the kitchen was located street side. After the renovation it is located pool side offering fantastic natural light while eating at the breakfast bar.



2009 Remodelers Awards

